

**CURRENTLY SELECTED PEDAL. MULTIPLE PEDAL COULD BE PARALELL CONNECTED TO THE SAME PC.**

**READ DATA OUT FROM PROPEDAL.**

**SAVES SETTINGS, AFTER CHANGING ANY SETTING, IT MUST BE SAVED TO THE PEDAL CONTROLLER.**

**EXPORT PROFILE TO XML FILE. YOU CAN STORE THEM ON YOUR PC.**

**RESET EVERY SETTING TO ITS FACTORY DEFAULT.**

**DEVICE AND SOFTWARE INFO.**



**THE BRAKE FORCE CAN BE ADJUSTED BY THIS VALUE AND WITH A POTENTIOMETER ON THE THROTTLE PEDAL. RECOMMENDED TO USE THE POTENTIOMETER FOR MAIN BRAKE FORCE ADJUSTMENT AND USE THIS SETTING ONLY TO COMPENSATE THE DIFFERENCE BETWEEN VARIOUS CARS AND VARIOUS SIM TITLES.**

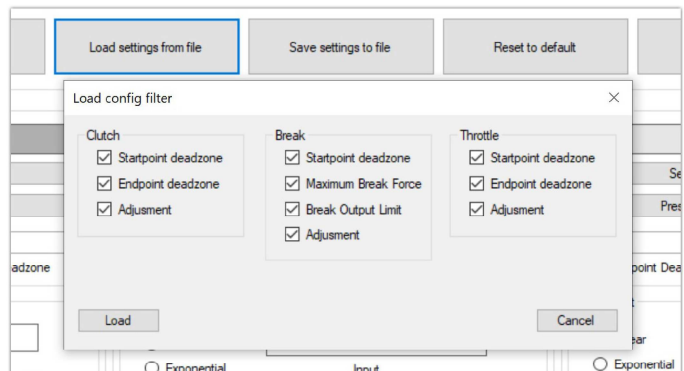
**\* THE PROFILE NOW ONLY LOADED TO SMARTDRIVE. IT MUST BE SAVED TO APPLY IT.**

**LOAD\* AN XML PROFILE FILE INTO SMARTDRIVE\*. BY CLICKING THE BUTTON YOU WILL GET AN POP-UP WINDOW WHERE YOU CAN SELECT THE SETTINGS TO LOAD.**

**PEDAL POSITION RAW INDICATOR. THE ACTIVE ZONE IS LIGHT GRAY. AFTER CALIBRATION THE INACTIVE/CUTTED ZONE BECOMES DARK GRAY.**

**ADDS EXTRA UPPER INACTIVE ZONE. ADJUSTMENT VALUE IS PERCENTAGE.**

**IT ADDS EXTRA LOWER INACTIVE ZONE. ADJUSTMENT IS IN PERCENTAGE.**



**TO CALIBRATE THE PEDAL END POINT, PUSH THE PEDAL ALL THE WAY DOWN AND HIT THIS BUTTON.**

**TO CALIBRATE THE PEDAL START POINT, LET THE PEDAL UNLOADED AND HIT THIS BUTTON.**

The SimtreCs ProPedal uses 16 bit controller. Regardless of settings in SmartDrive, each axis range is between 0 and 65535. Most of the simulators use these values and therefore additional calibration not needed. E.g. iRacing is an exception, because it uses its own RAW based calibration method. So driver must take care to press the pedal until it shows 65535 as a value. When You calibrate your pedal never use the option "Brake output limit" on SmartDrive. Recommended to use completely linear pedal curves in the simulator software, like "Brake force factor to 0" in iRacing, or "100% sensitivity" in rFactor 2... specific thoes settings in SmartDrive instead.